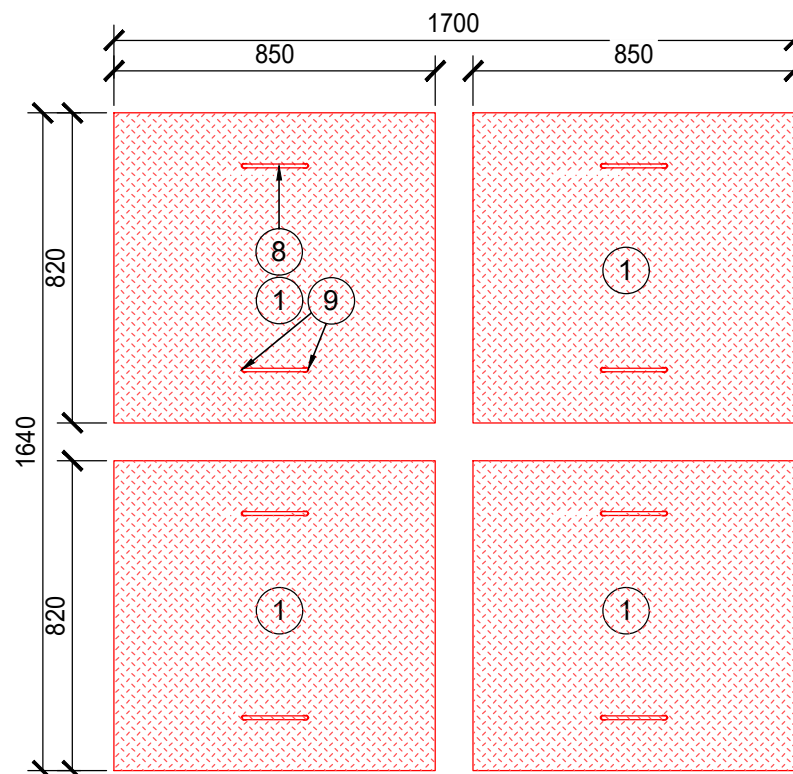
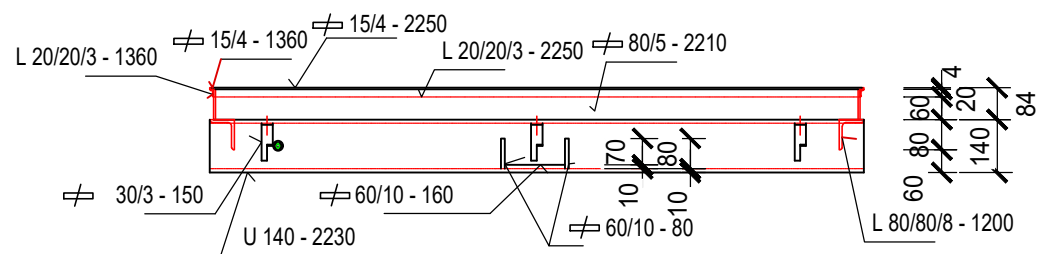
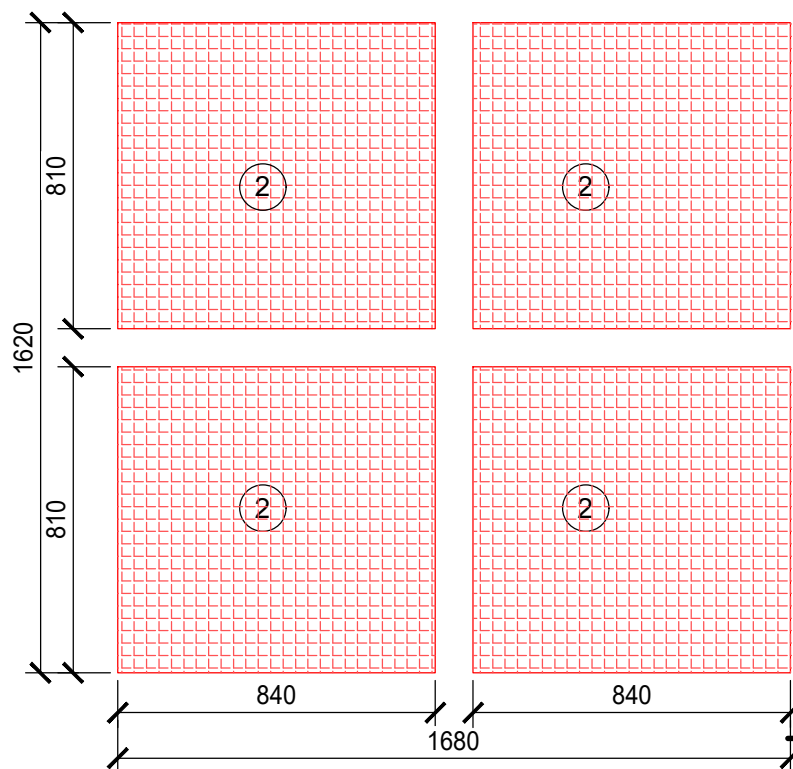
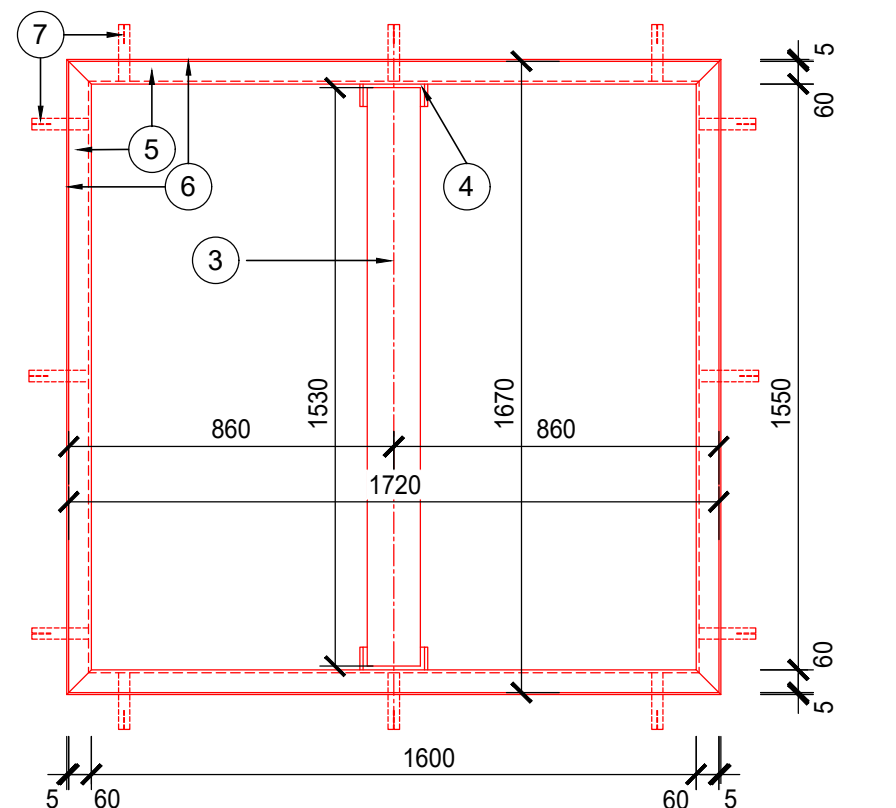
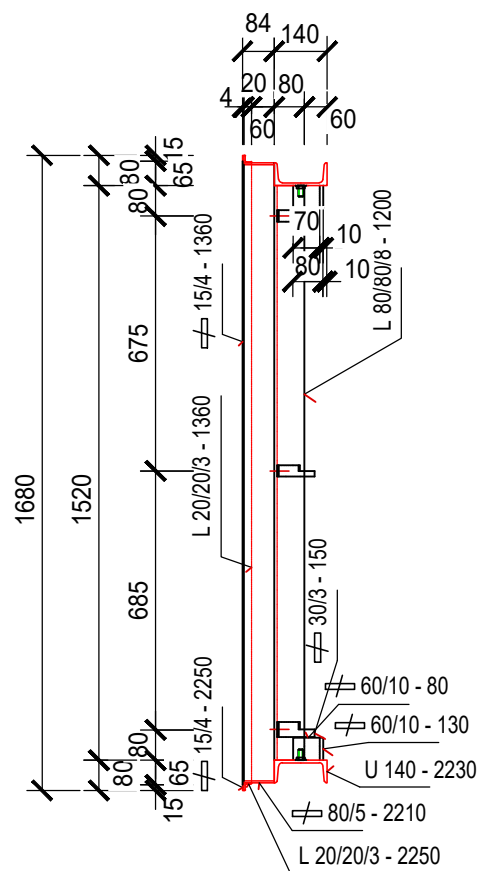
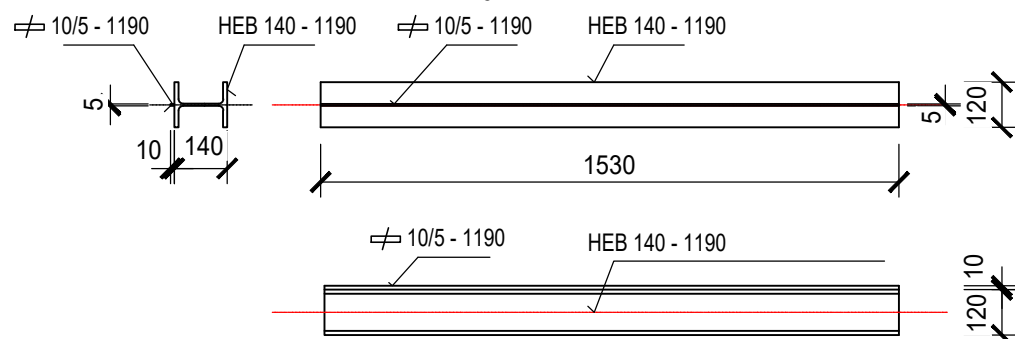


KLAD POROŘOŠTŮ



1	PLECH SE VZOREM ZRNA, TL.4mm, 0.70m2, 33.40kg/m2 = 23,28kg,	4ks = 93,2kg
2	LISOVANÝ POROROŠT P440-33-4 , 40x4mm, 0.68m2, 48.7kg/m2 = 33,14kg,	4ks = 132,5kg
3	VÁLCOVANÝ PROFIL HEB140, 1530mm, 33.7kg/bm = 52,41kg,	1ks = 52,41kg
4	VÁLCOVANÝ PROFIL UPE180, 60mm, 19.7kg/bm = 1.2kg,	2ks = 2,4kg
5	VÁLCOVANÝ PROFIL U č.160, 6,78m, 18.8kg/bm = 127,464kg	
6	PÁSOVINA 40x5mm, 6,82m, 1.57kg/bm = 10,71kg	
7	PRACNA Z PÁSOVINY 30x3mm, DĚLKA 150mm, 0.71kg/bm = 0.1kg,	12ks = 1.278kg
8	MADLO Z TYČE ø10mm + ZÁVIT M10, DĚLKA 175mm, 0.62kg/bm = 0.11kg,	8ks = 0,868kg
9	MATICE M10 – 16ks, PODLOŽKY PRO M10 – 16ks	

Kování komor B - nosníky poklopů 1:20



Výpis oceli pro 1 ks kování Bb

HEB 140 - 1530 - ks 1 - 1,53 x 1 = 1,53 m x 33,7 kg/m' = 51,6 kg
 \neq 10/5 - 1530 - ks 1 - 1,53 x 1 = 1,53 m x 0,393 kg/m' = 0,61 kg
 svary \neq 2 0,2 kg

celkem 52,41 kg